

BITTNER RACCOON-PROOF TREE SWALLOW NESTBOX.

4 BLUE BIRD

Floor size = 5 x 5 inches.

Depth (top of shelf to floor) = 6 1/2 inches.

(A) Side view, (B) Front view, (C) Top view without roof,
(D) Side view cross section, (E) Front view cross section.

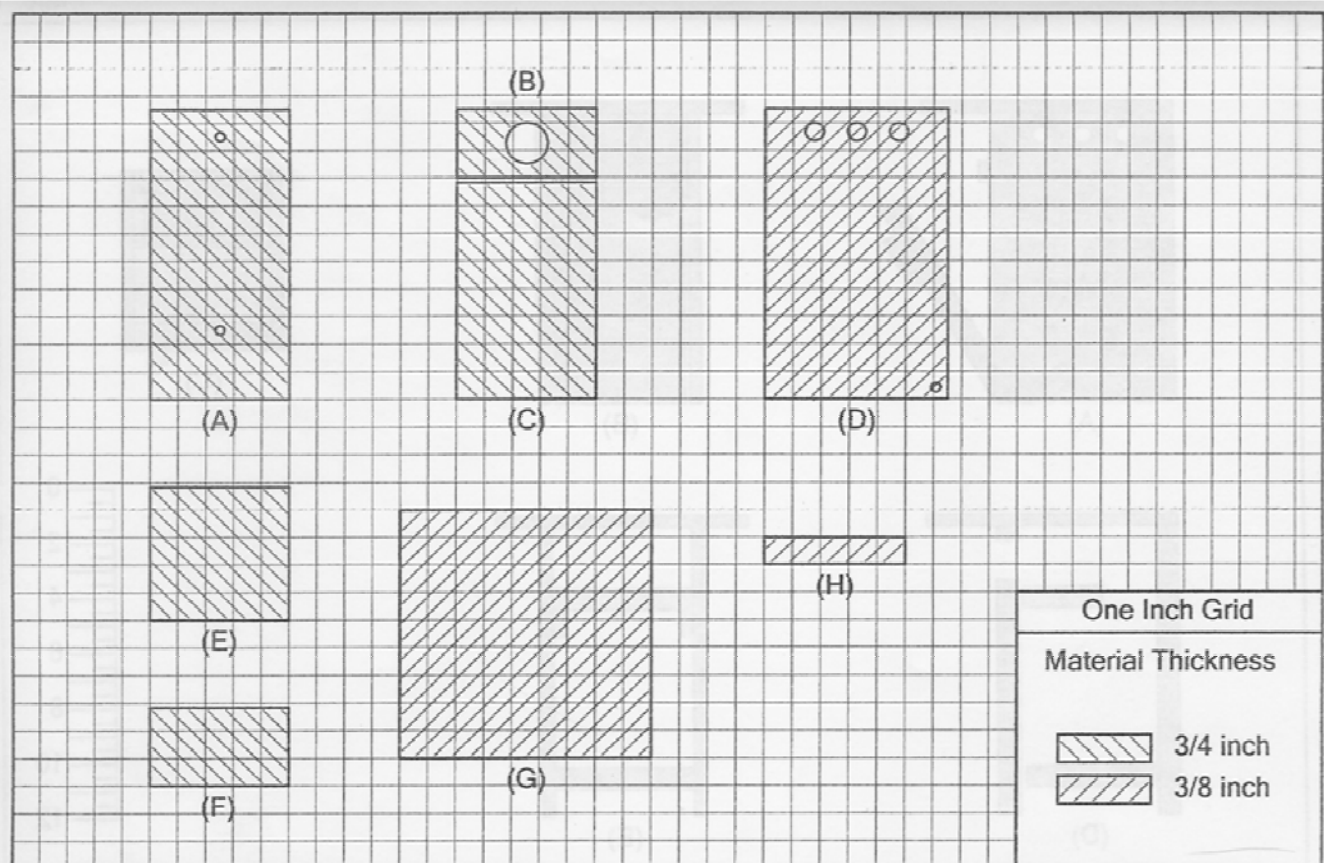
The entrance is 1 9/16 inch diameter (larger than necessary for swallows). It is based on the recommended size for Mountain Bluebirds, so that bluebirds can use the box if they want. A hole-size option which might be easier for some builders is a 1 1/2 x 1 5/8 inch vertical or horizontal oval, which is easily cut with a 1 1/2 inch hole saw. In Eastern Bluebird areas, a 1 1/2 inch hole is satisfactory.

(4 Western)

An option for holding the door closed is to use an easily removable double-headed nail through the sidewall and into the edge of the door. A sliding, drop-down door can be substituted to make the box more rain resistant.

The ability of young birds to fledge from a box of this design is not an issue, provided inner sides are rough.

The box is attached to a post with two screws. Use a long screwdriver through the entrance hole for the top mounting screw. I drill small pilot holes in the post for the screws.



BLUEBIRD &
TREE SWALLOW BOX: Parts List.

(A) Back, (B) Upper Front, (C) Door, (D) Sides(2), (E) Floor, (F) Shelf,
(G) Roof, (H) Shelf supports/Grab bars(2).

Material: spruce or fir are adequate.
3 feet of 1 x 6 board (3/4 x 5 1/2 inches).
2 square feet of 3/8 plywood.
1 1/2 inch nails & water-resistant glue.
10 x 2 wood screws(2) for mounting.

Main construction steps:

- 1) Attach sides to back.
- 2) Attach sides to floor, shelf and upper front.
- 3) Attach self supports/grab bars (use screws).
- 4) Attach roof to back and upper front.
- 5) Install door.

Make ventilation holes on sides,
drainage holes in floor, and
entry hole before assembling box.

* For side-opening box, shelf is
4 1/4" wide and 4" deep. Use grab
bar/shelf support on non-opening
side only.

All-cedar option:

Back, front and sides
each: 5 3/4 x 10 1/2"

Floor - 5 3/4 x 4 1/2"

* Shelf - 5 3/4 x 2 1/4"

Shelf supports - 1 x 4" thin
scrap wood

Roof - 8 x 10"

Front (door) can be made as a
single piece, using a nail through
one side of box for closure.