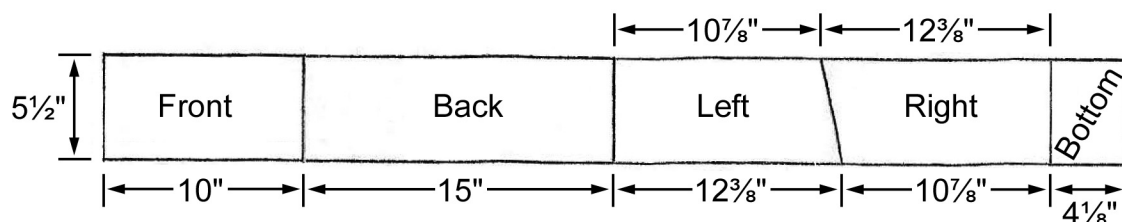
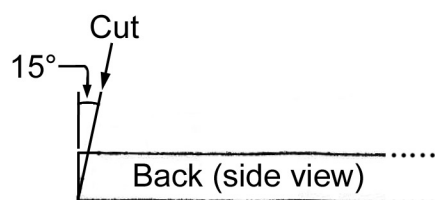


Building a Bluebird Nest Box

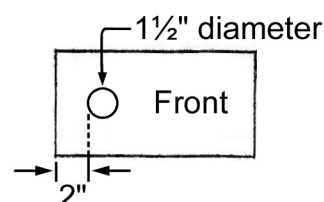
- Step 1** Cut the front, back, left, right, and bottom panels of the box from a 1" x 6" cedar fence board (actual width = 5½ inches) as shown below. The board should be at least 54 inches long to allow for the saw cuts.



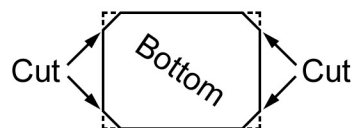
- Step 2** Cut a 15° bevel at one end of the back panel.



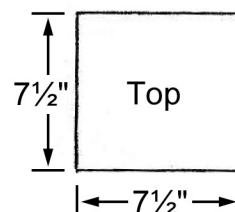
- Step 3** Cut a hole 1½" in diameter in the front panel. The edge of the hole should be 2" from one end of the panel.



- Step 4** Cut the corners off the bottom panel. When the box is assembled, the missing corners in the bottom will promote air circulation.



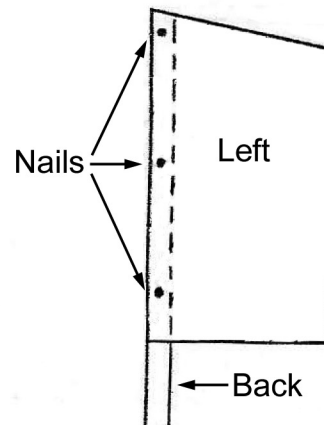
- Step 5** The top panel should measure 7½" x 7½". You can either cut it from a cedar board that is wider than a fence board or use two narrower boards with a total width of 7½".



Building a Bluebird Nest Box

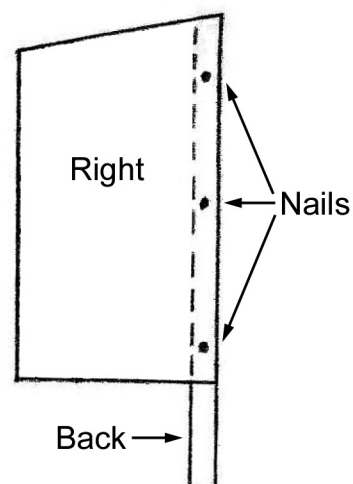
Step 6 Place the long side of the left panel on the back panel, flush with the beveled end of the back panel.

Nail the left panel to the back panel, spacing three nails equally along the edge.



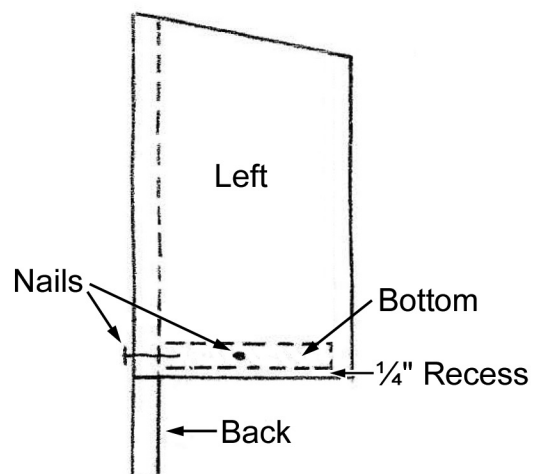
Step 7 Place the long side of the right panel on the back panel, flush with the beveled end of the back panel.

Nail the right panel to the back panel, spacing three nails equally along the edge.



Step 8 Insert the bottom panel so that it is recessed 1/4" from the bottom of the left and right panels.

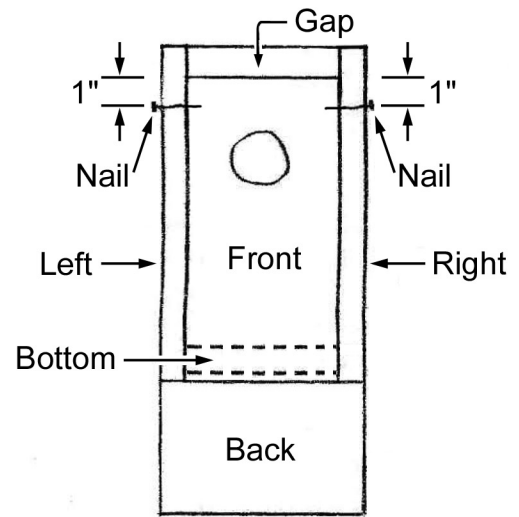
Nail the bottom panel to the back, left, and right panels using one nail per side.



Building a Bluebird Nest Box

Step 9 Insert the front panel between the left and right panels, flush with the bottom edge of those panels. This will leave a gap at the top of the front panel, which will promote air circulation.

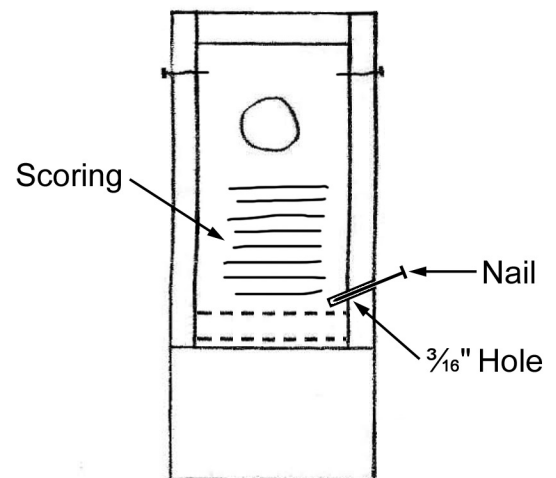
Nail the left and right panels to the front panel, using one nail on each side. Place the nails 1" from the top of the front panel. These nails will serve as hinges when the front is opened.



Step 10 Drill a $\frac{3}{16}$ " hole through the right panel into the front panel. Start the hole about 2" from the bottom of the right panel, and angle the hole slightly downward.

Insert a small nail into the hole to keep the front panel closed. The downward angle will prevent the nail from falling out. To open the box, remove the nail and swing the front panel up.

Score the lower inside of the front panel to give the chicks a foothold.



Step 11 Position the top panel flush with the back panel and centered over the side panels. If you're using two boards for the top, orient them so the seam runs left to right.

Nail the top panel to the back and side panels (but not the front), using two nails per panel.

If you made the top with two boards, cover it with a roofing shingle to keep water from penetrating the seam.

